



4  2  2 

**Contact** Troy Holmes  
0414 344 442

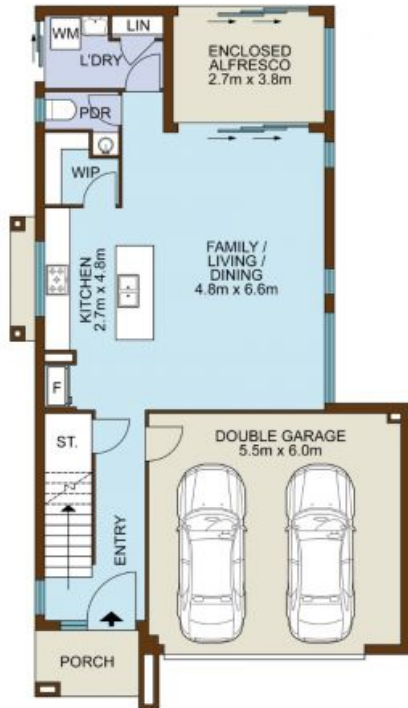
**Type** House

**Sold Date** 15/05/2024

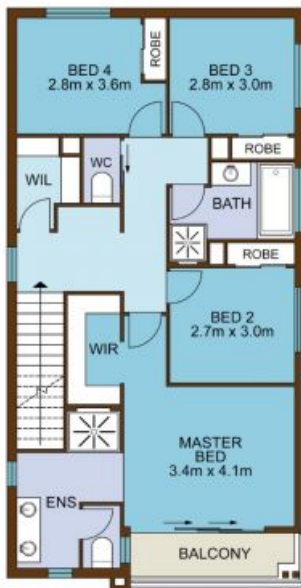
**Land** 424 m2

Beautifully sited on its corner block, this McDonald Jones residence offers an exceptional family lifestyle underpinned by quality throughout. Just two years young, it's at once supremely elegant and ultra-functional ? featuring crisp tones of wood, white and black, 9-foot ceilings downstairs and a luxury cook's kitchen. The home's outdoor spaces are lit by all-day sun, and comprise a custom-built veggie garden and a large backyard with tranquil pergola. Only a few minutes away from schools and amenities, this superb property achieves a premium standard of executive comfort and convenience.

- Near-new + desirable opportunity in a low-traffic residential pocket
- Free-flowing interiors, child-friendly yard with side access, area views
- Stone benchtops and breakfast island, gas cooking, walk-in pantry



ENTRY LEVEL



UPPERLEVEL



SITE PLAN

**HOLMES**  
REAL ESTATE

16 Ashwell Way, GLEDSWOOD HILLS

Not to scale • All measurements are approximate • Drawn for marketing purposes only